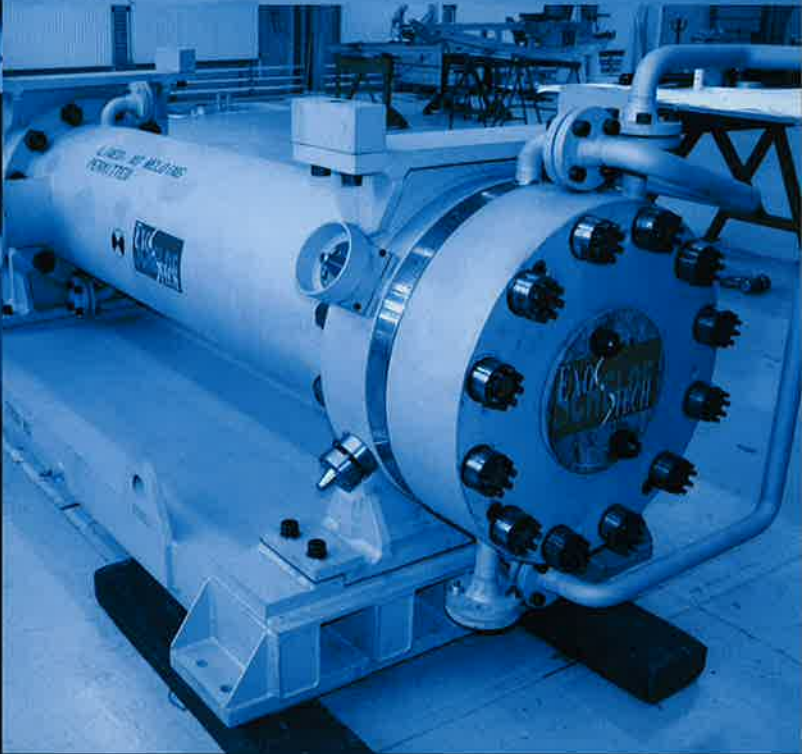
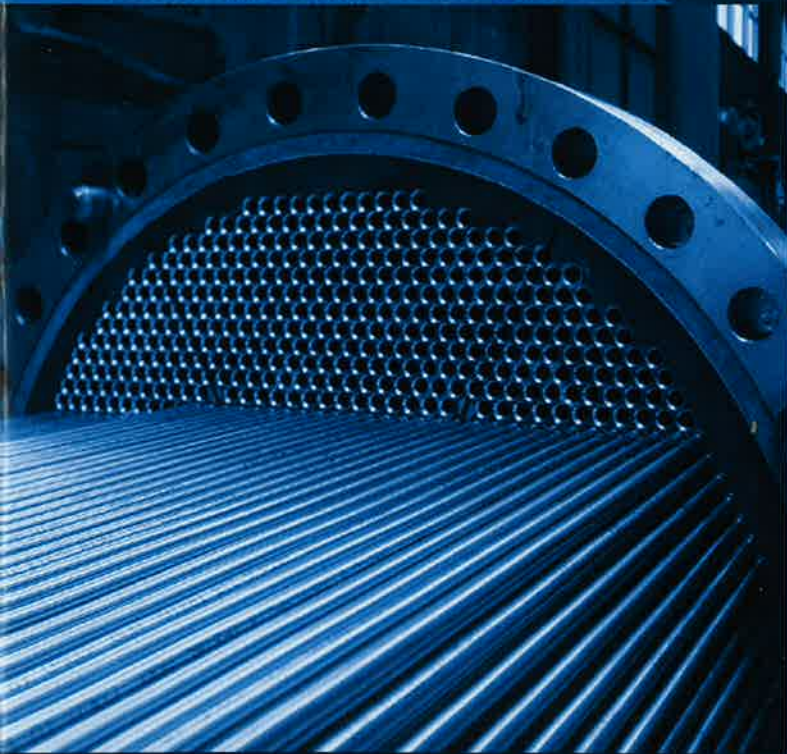
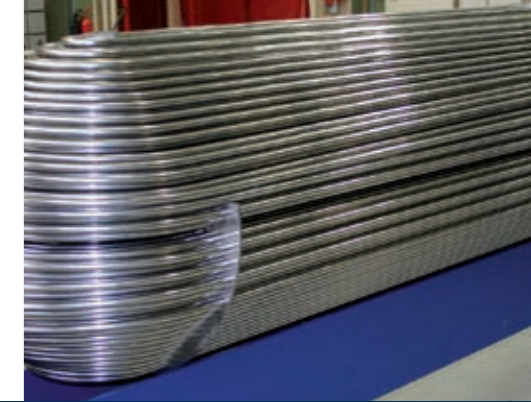


SCHELDE EXOTECH

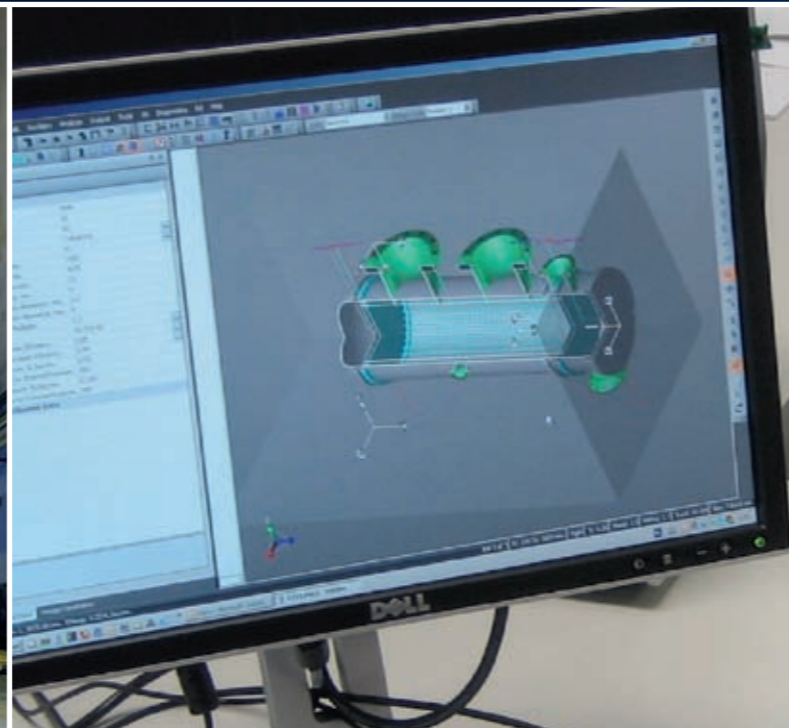
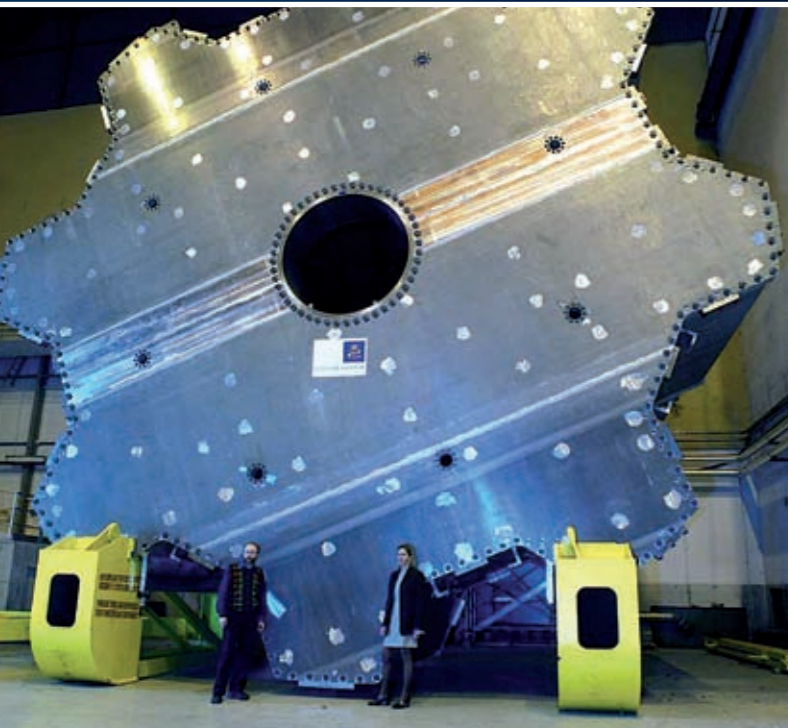


HIGH QUALITY PRODUCTS IN SPECIAL MATERIALS

... effective customized



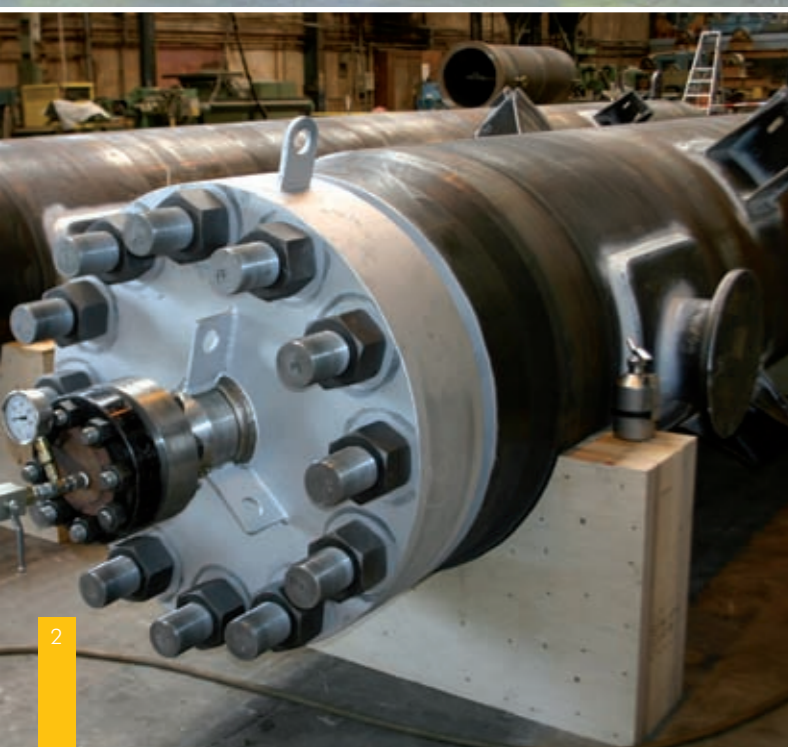
HIGH QUALITY PRODUCTS IN SPECIAL MATERIALS



Since 1998

Schelde Exotech was founded in 1998, arisen from merging the following companies: AKF Goes, Schelde Boiler Division and Schelde MT-Products. With the specific knowledge of these three companies a wide range of customers has been established in the chemical and petrochemical industries, electrical power plants, uranium enrichment facilities and research institutes. Among our customers are: DOW Chemical, Shell, Yara, Essent, Urenco, CERN, ASML, EPZ, Eastman, Indorama, DSM and many other established companies.

The engineers of Schelde Exotech develop, in consultation with the customer, products which are fabricated in Vlissingen. They work with the latest 3-D engineering software and the production department uses sophisticated production techniques such as waterjet cutting, NC machining and electron beam welding. The main activities are concentrated on processing and welding of exotic and high alloyed materials. Nearly all welding processes are qualified and applied.



... effective customized



SCHELDE EXOTECH POSSESSES THE FOLLOWING QUALITY CERTIFICATES:

- ISO 9001: 2000
- ASME U/U2-Stamp
- National Board R-Stamp
- PED (H/H1)
- SCC** (VCA**)
- Manufacturing License P.R. China

Schelde Exotech, located in Vlissingen - The Netherlands, covers 13,000 m2 production workshops, including two clean-rooms for the fabrication in temperature and humidity controlled conditions. Repair and replacement of this equipment can be done in our workshops in Vlissingen as well as at customer's location. Shipments are possible by road and open water.

The Schelde Exotech mission is making a profit based on; spirit of enterprise, excellent services, advising, optimal quality, motivated and skilled personnel, good production facilities and satisfied customers. It is the company's policy to supply the customers with quality products and services in a safe manner which comply fully with the mutually agreed terms, conditions and (inter)national laws. Schelde Exotech is specialized in the design and manufacturing of 'Special Products'. Throughout the years, a considerable knowledge has been realized by the dedicated team of experts.

Schelde Exotech offers her clients design, fabrication and testing of high quality and complicated equipment. The main customers in this area of special products are active in the market for energy, nuclear energy, chemical and petrochemical industry, scientific experiments and particle physics. The combination of excellent design and experienced manufacturing in temperature and humidity controlled clean rooms, leads to client satisfaction.



Besides special products and services, Exotech is also a reliable partner for repairs and replacement projects. Exotech has a 24/7 contact philosophy when it comes to emergencies. In such a situation Exotech will mobilize a repair team at earliest possible convenience, usually available within a few hours.

Replacement jobs can either be done on a like for like basis or with a new mechanical design. Exotech has the availability of the latest design calculation software to comply with all relevant design codes such as ASME, RTOD, PD 5500, AD, etc. and PED regulations. Both design code requirements and client design preferences form the basis of the fabrication design. With 2D and 3D CAD software the manufacturing drawings are generated. The major part of repairs and replacements is done for the chemical and petrochemical industries and power plants. The repairs and replacements mainly comprise heat exchangers, pressure vessels and reactors in various materials.

... effective customized

RESONANT VIBRATION

Resonant vibration is a method for reducing residual stress in welded or machined constructions and is performed with Formula 62® equipment. Schelde Exotech performs this stress relieving at her workshop as well as on location and is also distributor of this equipment for the Benelux and France.



WELDING

High quality welding: TIG, SMAW, GMAW, FCAW, SAW, ESW.
Qualified Welding Procedures for: Carbon Steel, Stainless Steel, Duplex, Nickel Alloys, Copper Alloys, Clad Steel, Aluminium, Titanium, Tantalum, Zirconium, etc

ELECTRON BEAM WELDING

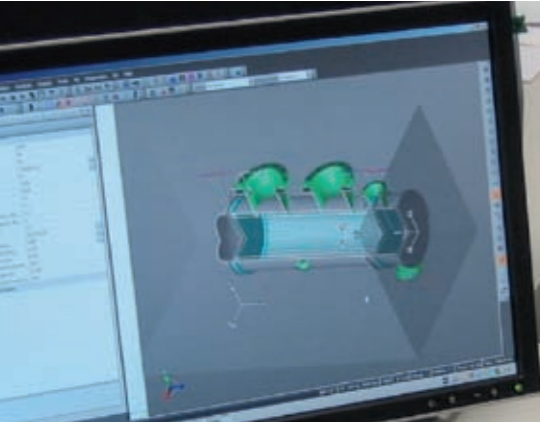
Is a fusion welding process in which a beam of high-velocity electrons is applied to the materials being joined. At the weld location the material melts as the kinetic energy of the electrons is transformed into heat upon impact. Shielding of the fusion is not applicable as the welding process is performed in a vacuum chamber. EB welding combines weld penetration, up to 80 mm thickness, with less heat input and is applicable on a wide range of materials. As the heat input is considerably lower than with other welding processes the deformation by weld shrinkage is limited. Even many dissimilar materials can be welded together. Exotech has extensive experience in the EB welding process and has the availability of three EB weld installations.



DESIGN

Schelde Exotech has a fully staffed Design Department and uses modern design tools like:

- AutoCad (2D design program)
- Mechanical Desktop (3D design program)
- Inventor (3D modeling-design program)
- PV Elite (ASME Code calculations, PD 5500)
- Scades (RTOD)
- BabsyWin (EN 13445 Code calculations, AD 2000)
- Ansys Mechanical (FEA)



TUBE-TUBESHEET WELDING

Automatic tube-to-tubesheet welding allows increase of quality and production. Thousands of tube-to-tubesheet welds may be required in Heat Exchangers. This underlines the importance of an easy reproducible, reliable and high-quality joint. A considerable amount of time and expenses can be saved by selecting the correct welding process.

YOUR PARTNER FOR REPAIRS AND REPLACEMENT PROJECTS

HIGH TEMPERATURE VACUUM BRAZING

Brazing is a joining process where a filler metal is heated to melting temperature above 450°C and distributed between two or more close-fitting parts by capillary action to form a strong, sealed joint. The brazed joint becomes a sandwich of different layers, each metallurgically linked to the adjacent layers. Exotech has extensive experience, furnaces and equipment to suit the clients requirements

INDUSTRIES

- Oil & Gas
- (Petro) Chemical
- Energy
- Defence
- Research Institutes

INTERNAL BORE WELDING

Another special process by Schelde Exotech is Internal Bore Welding for tube-to-tubesheet connections. The difference with usual tube-to-tubesheet welding is the absence of a gap between the outside of the tube and the inside of the tubesheet hole. Internal Bore Welding is often applied in highly corrosive environments.



MACHINING, CUTTING AND FORMING

Schelde Exotech has a well equipped shop to perform machining and other activities. This makes Schelde Exotech less dependent on sub-contractors. Schelde Exotech also performs these services for third parties.

- (CNC) Drilling
- (CNC) Milling
- (NC) Turning
- Rolling
- (CNC) Waterjet and Plasma Cutting

STRESS RELIEF

Schelde Exotech performs stress relieving by both heat treatments as well as by resonant vibration.



... effective customized



SCHELDE EXOTECH

The logo for Exotech, featuring the word 'EXO' in yellow and 'TECH' in white, both in a bold, sans-serif font, set against a dark blue background.

POSTAL ADDRESS: PO Box 531 - 4380 AM Vlissingen

VISITORS ADDRESS: Koningsweg 2 - 4381 NA Vlissingen

Phone +31 (0)118 485990 - Fax +31 (0)118 485959

E-mail info@exo.schelde.com - Internet www.exotech.nl